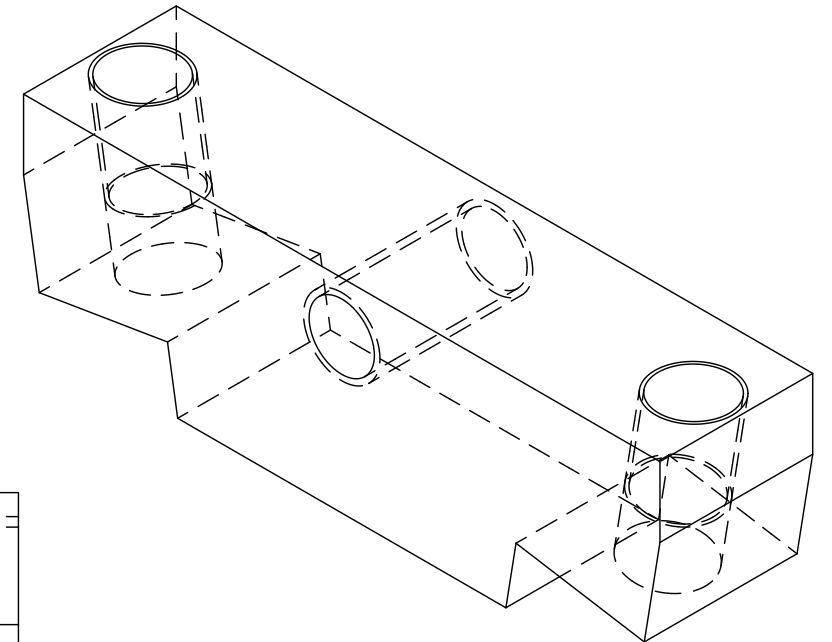
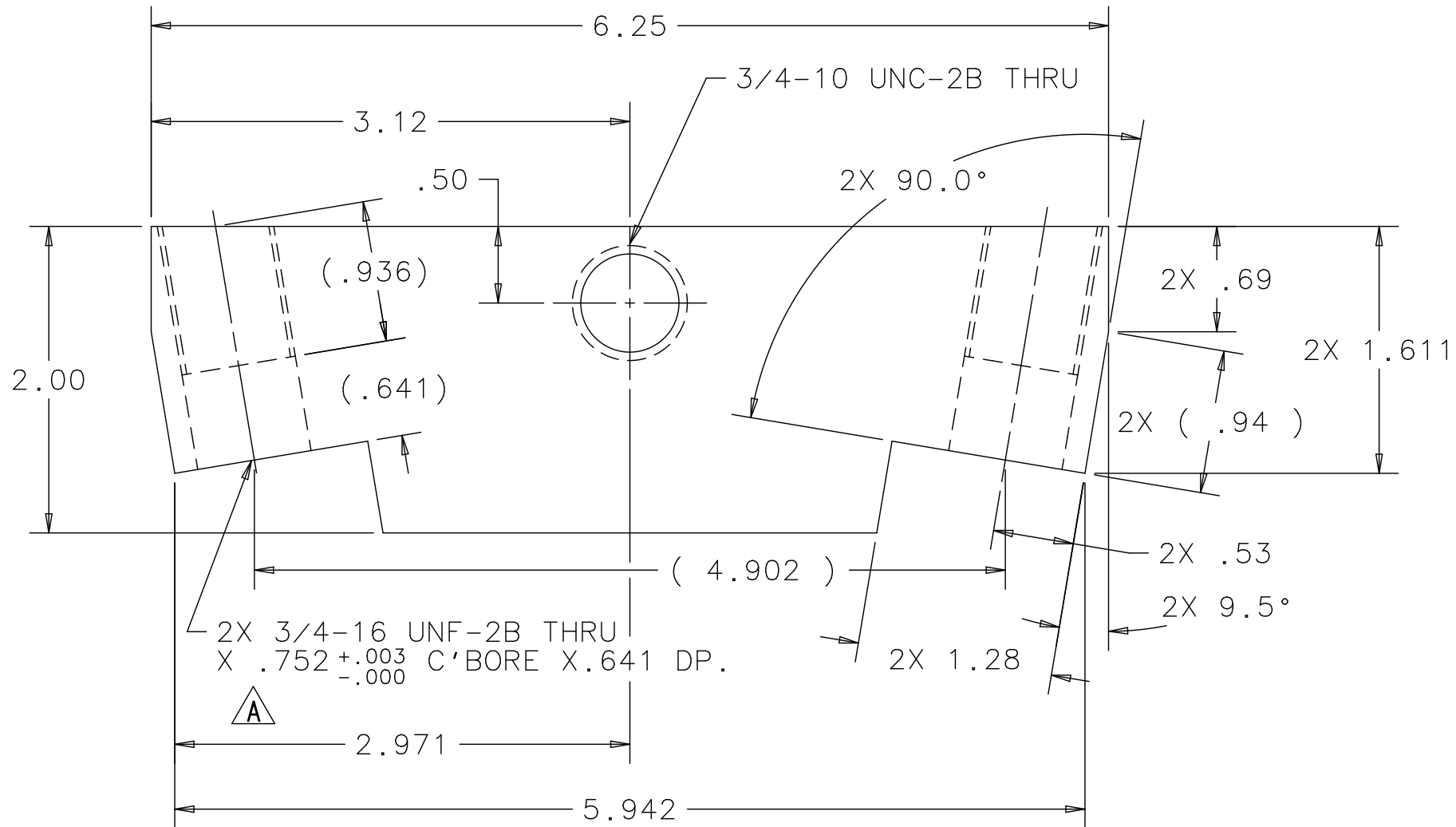
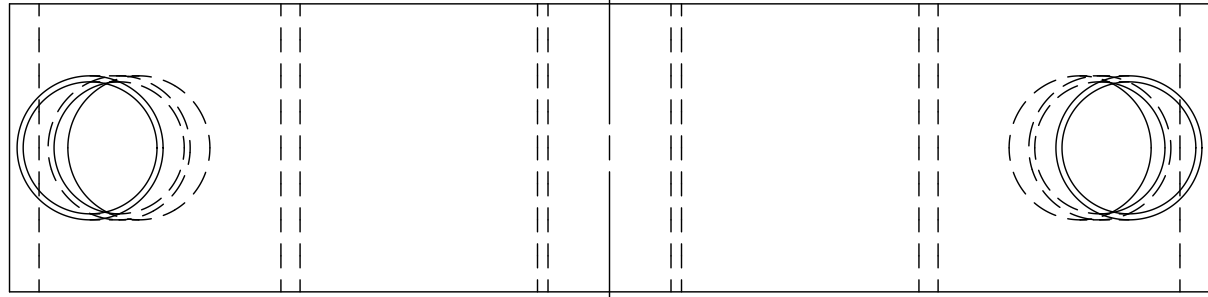
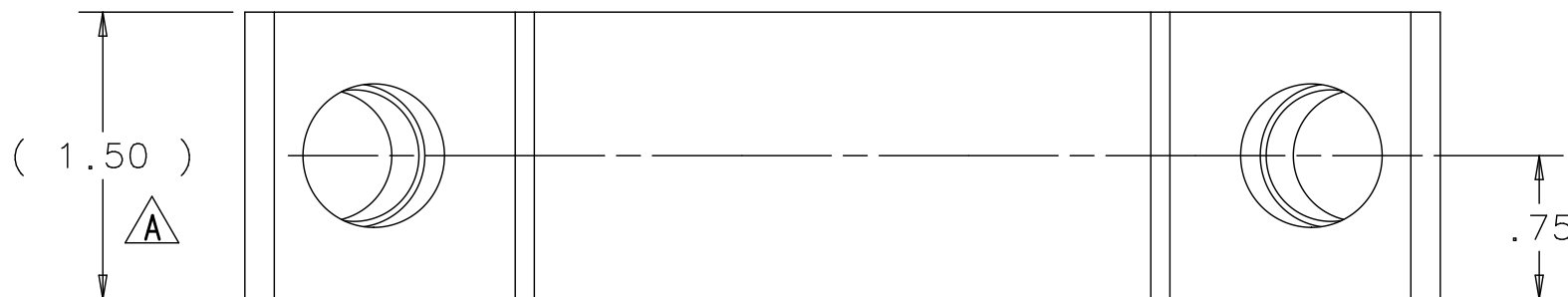
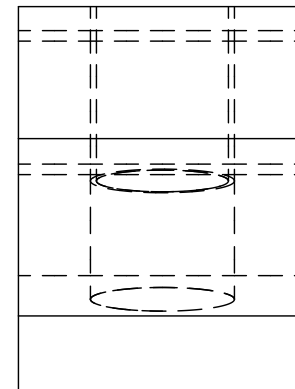


REV	DESCRIPTION	DRAWN	DATE
		APPROVED	DATE
A	PLATE WAS .75 THICK NOW 1.50 TAP HOLE WAS 5/16 NOW 3/4 PART REDESIGNED	G SMITH	19-JUL-2013
		D FRIEND/E VILLEGAS	19-JUL-2013



ISOMETRIC VIEW
SCALE : 1/16



NOTICE: IMAGE OBTAINED FROM FERMILAB
Computer Aided Design Group.
This image is an uncontrolled document and may not be
the current, approved version.

This information is provided for REFERENCE use only.
Not for MANUFACTURE, or DESIGN INFORMATION.
All information contained in this document represents
work sponsored by an agency of the U.S. Government.
Neither the U.S. Government nor any agency thereof,
nor Universities Research Association, Inc., nor any of
their employees or officers, makes any warranty, express
or implied, or assumes any legal liability or
responsibility for the accuracy, completeness, or
usefulness of any information, apparatus, product or
process disclosed, or represents that its use would not
infringe privately owned rights.

UNLESS OTHERWISE SPECIFIED			ORIGINATOR	E.VILLEGAS	18-SEP-2012
.XX	.XXX	ANGLES	DRAWN	G.SMITH	18-SEP-2012
± .03	± .010	± 1.0°	CHECKED	D.FRIEND	24-OCT-2012
1. BREAK ALL SHARP EDGES .015 MAX. 2. DO NOT SCALE DRAWING. 3. DIMENSIONS BASED UPON ASME Y14.5M-1994 4. MAX. ALL MACH. SURFACES 125/ 5. DRAWING UNITS: U.S. INCH			APPROVED	E.VILLEGAS	25-OCT-2012
			USED ON		MD-489970
MATERIAL			ASTM-A36 STEEL		

FERMI NATIONAL ACCELERATOR LABORATORY
UNITED STATES DEPARTMENT OF ENERGY

NOVA-NEAR_DETECTOR
MUON CATCHER
CAM FOLLOWER HOLDER

SCALE	DRAWING NUMBER	SHEET	REV
1:1	3929.330-MB-489971	1 OF 1	A
CREATED WITH : Ideas12NXSeries		GROUP: PPD/MECHANICAL DEPARTMENT	