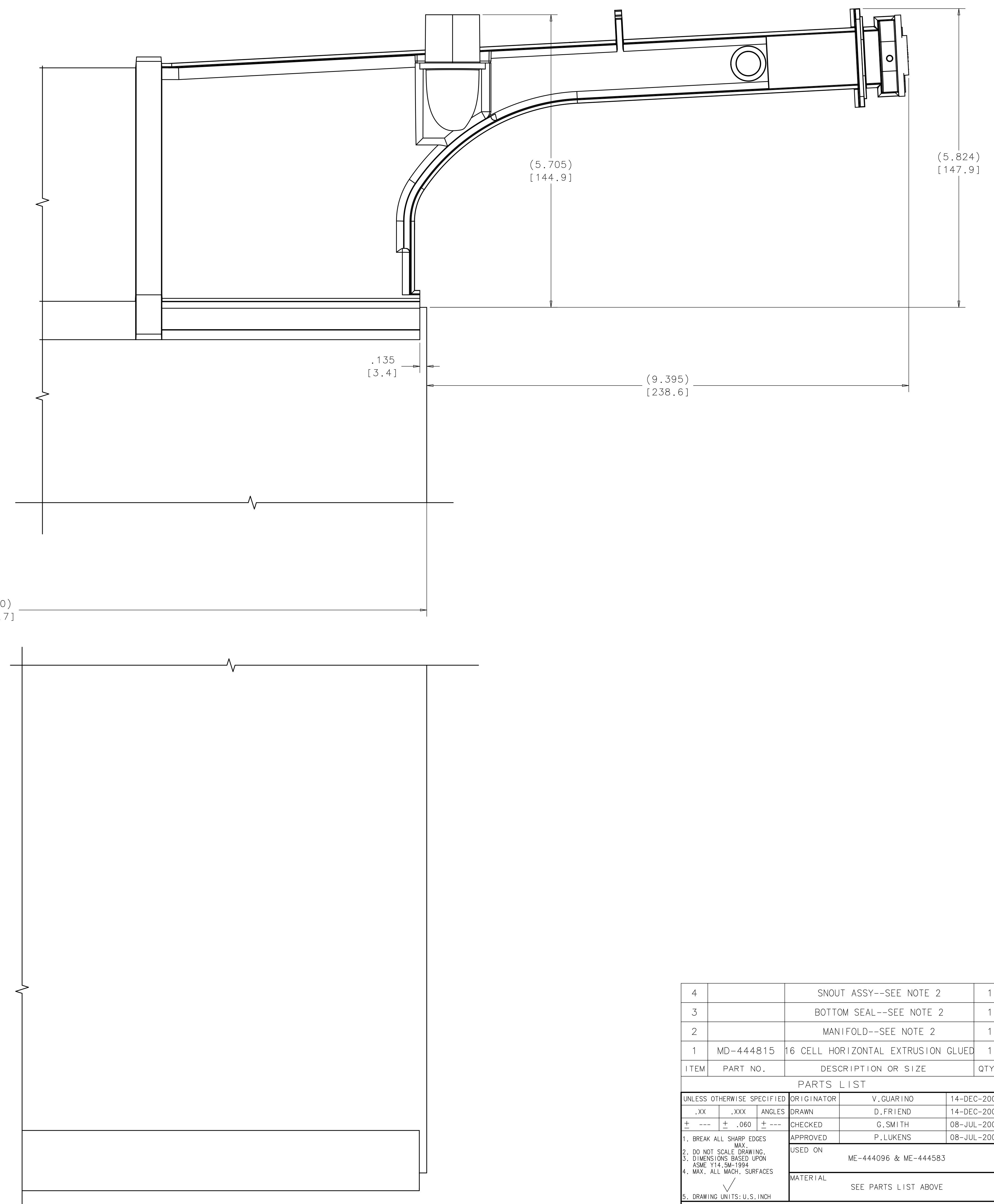
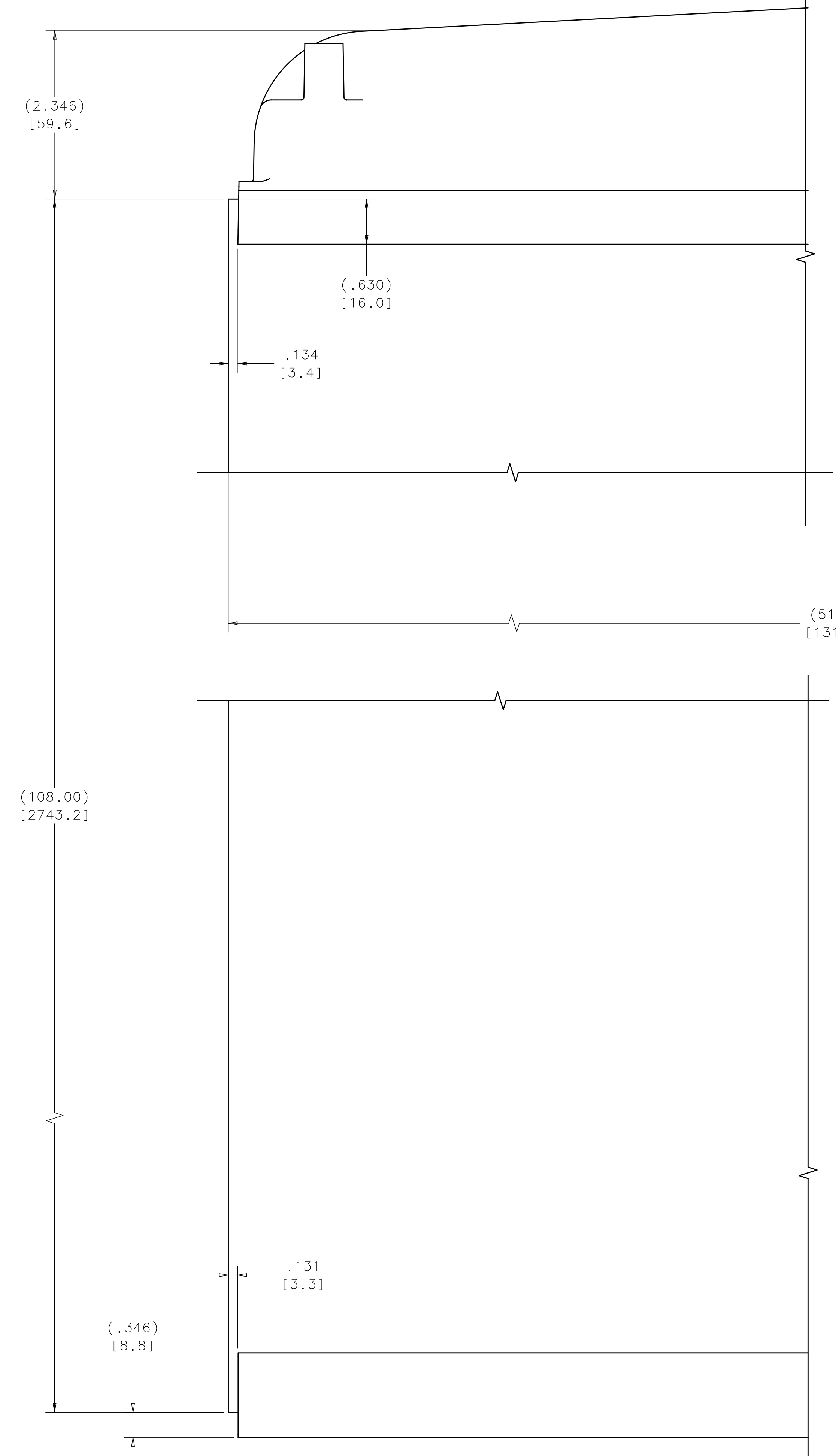
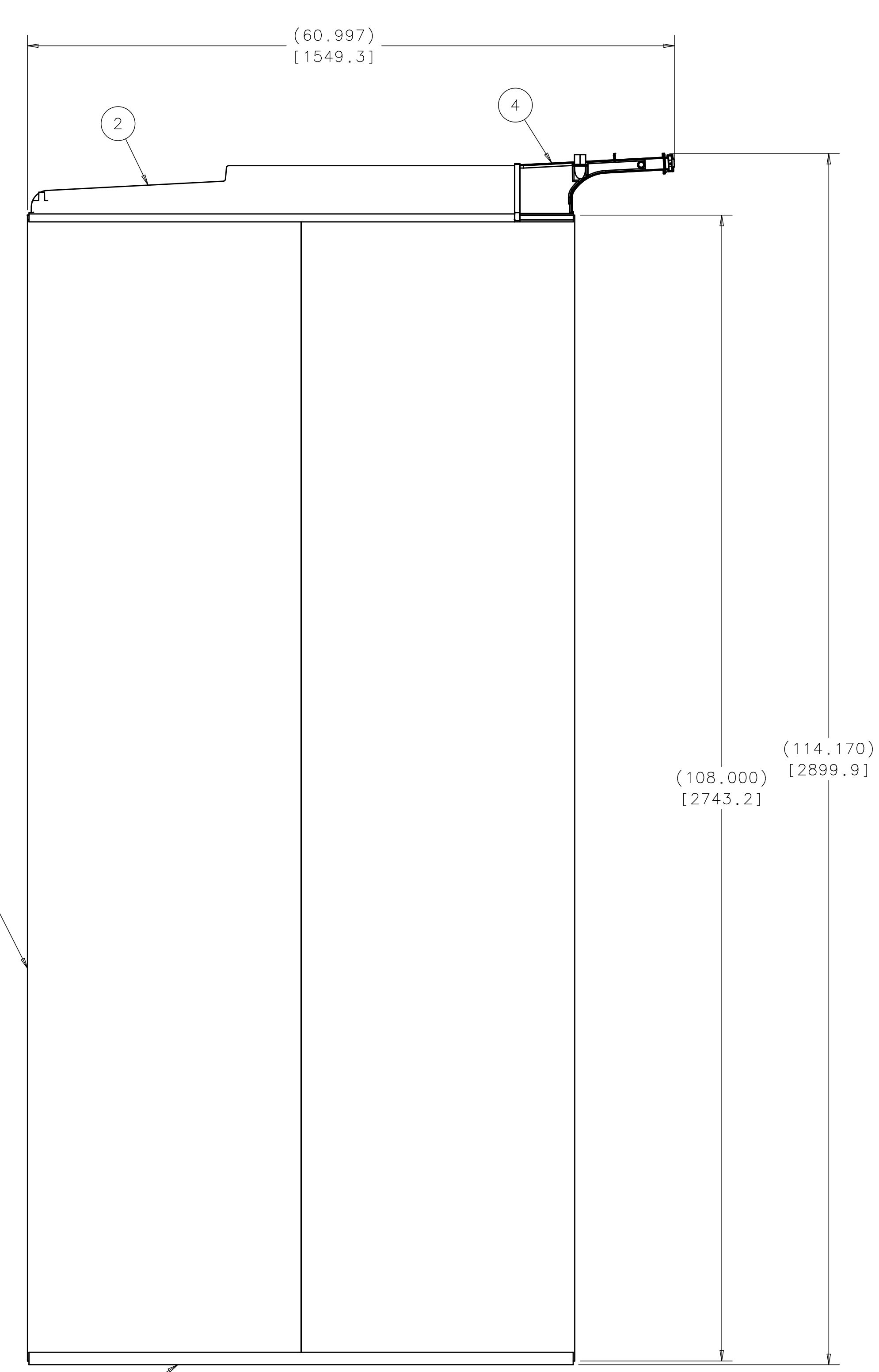
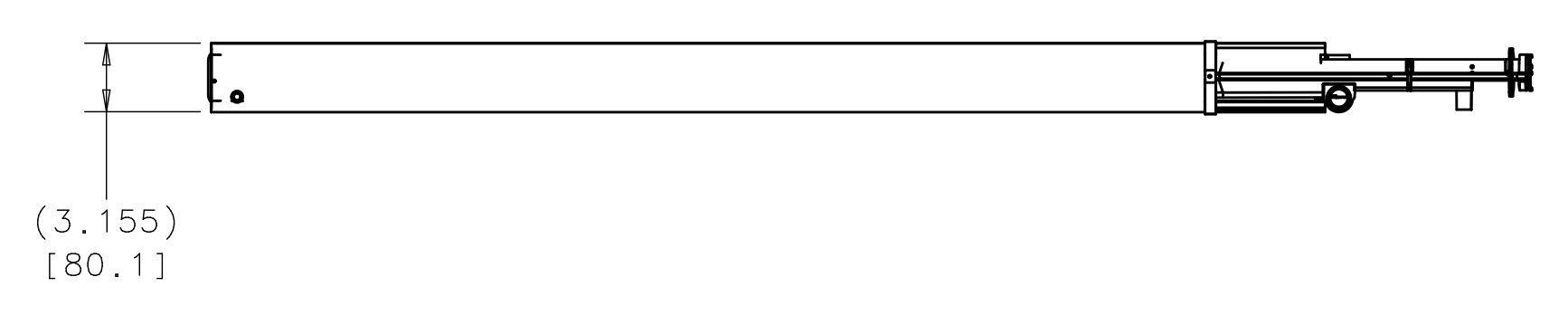


REV	DESCRIPTION	DRAWN	DATE
A	CHG'D NOTE 1 WEIGHT FROM 85 LBS TO 131 LBS. UPDATED ITEMS #2 & 4 W/CURRENT VERSION.	D. FRIEND GARY W. SMITH	21-SEP-2009 08-OCT-2009



ITEM	PART NO.	DESCRIPTION OR SIZE	QTY.
4		SNOUT ASSY--SEE NOTE 2	1
3		BOTTOM SEAL--SEE NOTE 2	1
2		MANIFOLD--SEE NOTE 2	1
1	MD-444815	16 CELL HORIZONTAL EXTRUSION GLUED	1

PARTS LIST			
UNLESS OTHERWISE SPECIFIED	ORIGINATOR	V. GUARINO	14-DEC-2007
.XX	.XXX	ANGLES	DRAWN
± ---	± .060	± ---	CHECKED
			APPROVED
1. BREAK ALL SHARP EDGES		USED ON	
2. DO NOT SCALE DRAWING.		ME-444096 & ME-444583	
3. DIMENSIONS BASED UPON ASME Y14.5M-1994		MATERIAL	
4. MAX. ALL MACH. SURFACES		SEE PARTS LIST ABOVE	
5. DRAWING UNITS: U.S. INCH			

2. ALL INTERNAL PIECE PARTS/SUB-ASSEMBLIES ARE AS PROVIDED BY THE UNIV. OF MINNESOTA.

1. ESTIMATED WEIGHT = 131 LBS.

NOTES:

ENLARGED CORNER VIEWS

**FERMI NATIONAL ACCELERATOR LABORATORY**  
UNITED STATES DEPARTMENT OF ENERGY

NOVA-DETECTOR\_PROTOTYPE  
IPND PVC MODULES  
HORIZONTAL MODULE ASSY

SCALE 1/8" & 1/1"	DRAWING NUMBER 3929.000-ME-444095	SHEET 1 OF 1	REV A
-------------------------	--------------------------------------	-----------------	----------

CREATED WITH: Ideas12NXSeries | GROUP: PPD/MECHANICAL DEPARTMENT